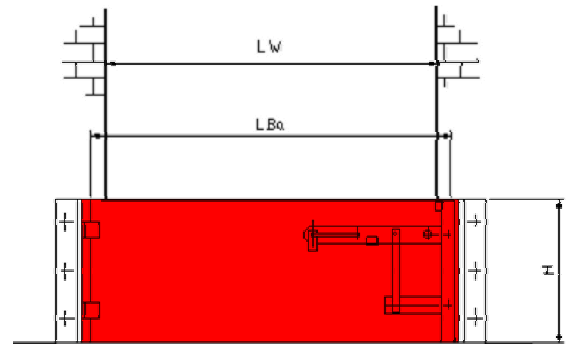


2.5 Retention barrier type BL/BHS-M

Article root number: 036

Barrier – horizontally swivelling Manual operation

Dimensions:		
Standard height		300 to 1000 mm
Special situations		100 to 1500 mm
Standard length	up to	5000 mm
Special situations	up to	8000 mm
Width		50 mm (10 mm)



2.5.1 Description

Suitable for all surfaces.

The basic version of the Retention Barrier features a rectangular, integral hollow aluminium profiled section with a compressible, partially highly adaptable seal affixed to the side surfaces.

The swivelling apparatus and the abutments of the tensioning device are securely mounted to the floor/ground and wall next to the opening to be secured and then sealed. As an alternative, mounting within the doorjamb is also possible. The barrier body is mounted on hinges. A tensioning lever with two locking devices

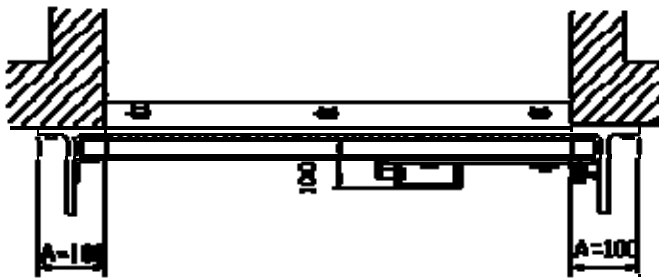
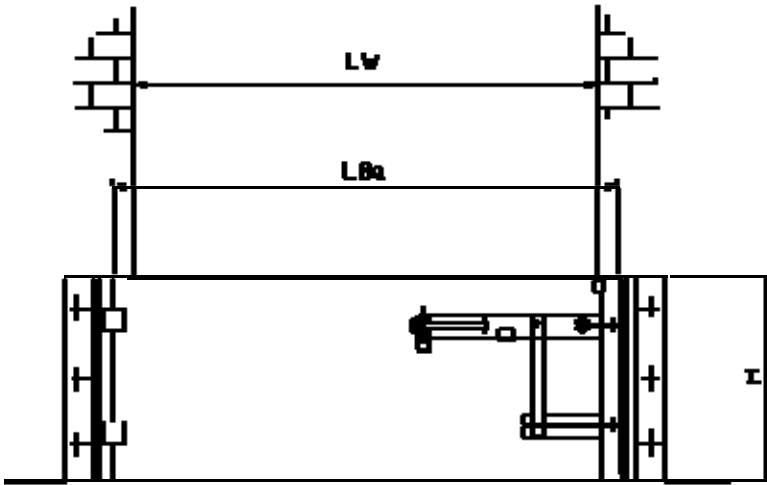
serves for the purpose of closing. Operation is similar to the procedure of closing a door. For sealing in the area of the floor/ground in the case of Type 1, a floor angle is provided which can be safely walked over and which conforms to accident prevention measures. The floor rail does not apply in the case of Type 2. The barrier body is raised and lowered with the help of a lever-type aid.

Barrier bodies and mounting fixtures are furnished with a red paint finish, preferably "traffic red" RAL 3020. The remaining metal components are galvanized or made of aluminium.

Features:

- Ease of use and variable
- Manufactured according to LGA Test Guideline 3/93
- Quality-monitored (LGA, Materials Testing Institute, Nuremberg, Germany)
- Field-tested

2.5.2 Drawing – "Type 1"

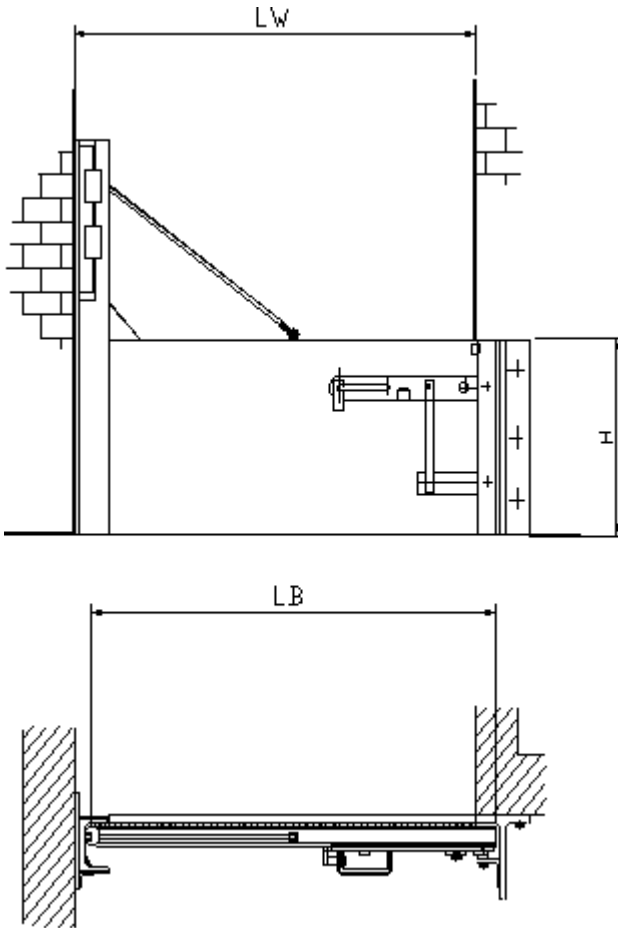


BL / BHS-1 (Barrier – horizontal – swivelling capability)

With limit stop on floor

Retention height H [mm]	LB [mm]		
300, 350	up to 5000	LW = clearance width	A = 100 mm
400, 450		LB = barrier length	LBi = LW – 70 mm
500, 550		LBi = barrier inside door jamb	LBa = LW + 100 mm
600, 650		LBa = barrier outside of door jamb	LBi/LBa = LW
700, 750		LBi/LBa: partly inside/partly outside	
800, 850			
900, 950			
1000			

2.5.3 Drawing – "Type 2"



BL / BHS-2 (Barrier – horizontal – swivelling capability – hoisting gear)			
With limit stop on floor			
Retention height H [mm]	LB [mm]		
300, 350	up to 5000	LW = clearance width	LBi = LW – 70 mm LBa = LW + 100 mm LBi/LBa = LW
400, 450		LB = barrier length	
500, 550		LBi = barrier inside door jamb	
600, 650		LBa = barrier outside of door jamb	
700, 750		LBi/LBa: partly inside/partly outside	
800, 850			
900, 950			
1000			

Europe

Blobel Umwelttechnik GmbH

Ziegeleistraße 5
86368 Gersthofen, Germany

Telephone: +49 (0)821 498190-0
Telefax: +49 (0)821 498190-30

email: info@blobel.de
Web: www.blobel.de

North America / Canada

BLOBEL Environmental Engineering LLC

270 Presidential Drive
Wilmington, Delaware 19807, USA

Telephone: +1 302-353-1555
Telefax: +1 302-288-3753
Mobile: +1-215-666-2267

email: info@blobel.us
Web: www.blobel.com

Asia / Pacific / South America

Blobel Environmental Engineering

6/41 Belgrave Street
Sydney NSW 2024, Australia

Telephone: +61 (0)2/93 69 35 04
Mobile: +61 (0) 4 19 27 94 81

email: mail@blobel.com
Web: www.blobel.com